

Product Overview

**Stabilize RNA, DNA and other biological samples
at ambient temperature
for transport, storage, and day-to-day handling**

- prices on request -

GenPlate®

- Risk-free, high density ambient dry state storage and transport of biological samples e.g. blood, genomic DNA, purified plasmid DNA, crude bacterial suspension (clones), or glycerol bacterial stock
- **384-well microplates with embedded FTA paper:**
Samples are entwined in the fibrous network of the cellulose matrix of the FTA paper. The entwined sample is dried completely at room temperature, the plate is sealed with an adhesive cover and is afterwards ready for transport or storage at ambient temperature
- Each embedded FTA disc in the microplate can hold up to 10 µl of a sample or 100 ng DNA
- Replaces the expensive shipment of samples with dry ice or cool packs
- Simple recovery of the samples, optionally also with GenSolve™ (see page 4)
- GenPlates® in ANSI/SLAS 1-2004 format are compatible with commercially available liquid handling systems (also available from us, further information on request)
- Each plate has a foil sealed top and bottom and is supplied with a 14-digit barcode which specifies plate type, region configuration, and unique plate number

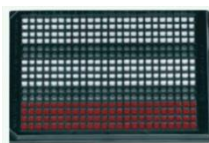
GenPlate® is available in different configurations:



GVNP-20

Completely FTA filled

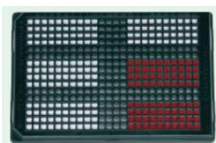
For maximum amount of samples stored



GVN3P-20

3 FTA regions

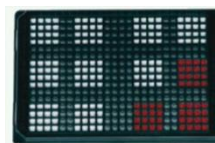
e.g. for samples of 3 different patients



GVN6P-20

6 FTA regions

e.g. for DNA extracted from buccal swabs



GVN12P-20

12 FTA regions

e.g. for DNA samples extracted from mouthwash collection



GVN24P-20

24 FTA regions

Format particularly suitable for human blood samples

Cat. No.

Description

GVNP-20	GenPlate® , completely filled with FTA paper, for 384 samples, 20 plates
GVN3P-20	GenPlate® , 3 FTA regions, 96 elements per region, 20 plates
GVN6P-20	GenPlate® , 6 FTA regions, 40 elements per region, 20 plates
GVN12P-20	GenPlate® , 12 FTA regions, 16 elements per region, 20 plates
GVN24P-20	GenPlate® , 24 FTA regions, 4 elements per region, 20 plates
GVN24P6-20	GenPlate® , 24 FTA regions, 6 elements per region, 20 plates
GVSL1-20	GenPlate® replacement seals, 20 seals
GVSL1-100	GenPlate® replacement seals, 100 seals

Active Chemical Protection™ for Nucleic Acids

The patented chemical matrix from GenTegra protects nucleic acids while stored and transported at ambient temperatures and provides protection against environmental damage that might destroy DNA and RNA.

GenTegra® RNA

- Quantitative recovery of RNA from $\leq 20 \mu\text{g}$
- Quality is comparable with input RNA
- Recovery in volume of 20 – 50 μl
- Protecting against RNase in all standard buffer systems
- Compatible with RNA from cell lines, blood, PAXgene, fresh and frozen tissue, FFPE tissue
- Suitable for RNA purified using all standard kits and protocols (Invitrogen, Ambion, Qiagen, Trizol)
- Applicable with all common storage buffers, including water, TE, EDTA and citrate.
- Increased stability in liquid state for up to 8 hours following rehydration of dried RNA, across up to 5 cycles
- Use in downstream applications without further purification; no inhibition of RT-qPCR and expression profiling
- Stability for transport due to tolerance for extreme temperatures and extreme temperature shifts (-80 °C to +72 °C)
- Replaces the expensive shipment of samples with dry ice or cool packs
- All GenTegra® RNA products have a shelf life of more than 3 years when stored at room temperature

Stabilize sample in GenTegra® RNA and dry



Store or transport at ambient temperature



Recover RNA sample by adding water

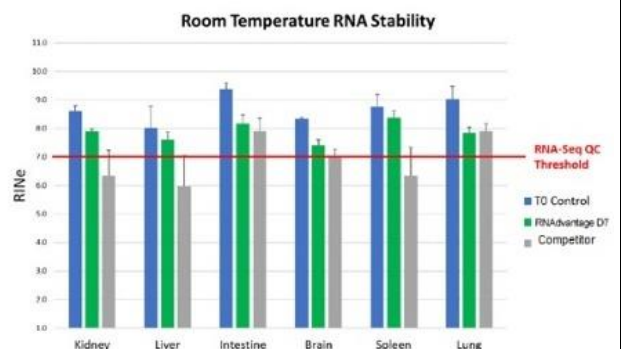


Cat. No.	Description
GTR100-B	GenTegra® RNA , dry bulk, for 100 samples, can be stored at 4 °C for 2 weeks when rehydrated
GTR3101	GenTegra® RNA , 0.3 ml cluster tube, 1 rack, 96 tubes per rack, no barcode
GTR3110	GenTegra® RNA , 0.3 ml cluster tube, 10 racks, 96 tubes per rack, no barcode
GTR3110-BC	GenTegra® RNA , 0.3 ml cluster tube, 10 racks, 96 tubes per rack, with barcode
GTR5003-S	GenTegra® RNA , 0.5 ml screw cap tube, sample test kit 3-pack, with protocol
GTR5025-S	GenTegra® RNA , 0.5 ml screw cap tube, 25 tubes
GTR5100-S	GenTegra® RNA , 0.5 ml screw cap tube, 100 tubes <u>Please note:</u> Product will be delivered in 4 packs of 25 tubes/pack
GTR4001-P	GenTegra® RNA , 96-well plate, 1 plate, no barcode
GTR4010-P	NEW! GenTegra® RNA , 96-well plate, 10 plates, individually packaged, no barcode
GTR4010-PBC	GenTegra® RNA , 96-well plate, 10 plates, with barcode
GTRNEO-32	GenTegra® RNA-NEO , for treating Mitra VAMS tips, 30 μl for 32 tips

GenTegra RNAdvantage™

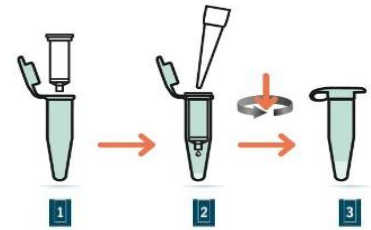
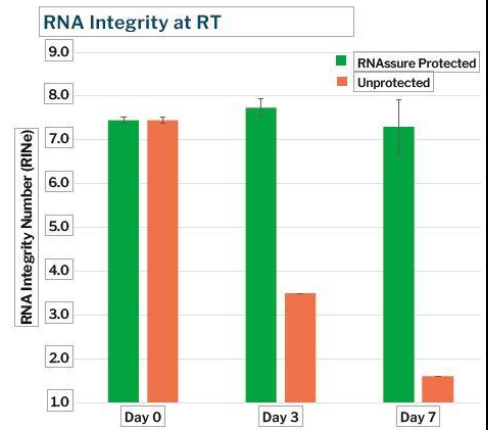
- Stabilizes RNA in fresh tissue samples by inactivating RNases immediately
- Yields RIN-value ≥ 7 leading to reliable and high-quality RNA sequencing results
- Protects RNA for 7 to 14 days at room temperature
- Does not inhibit rtPCR

Cat. No.	Description
GTRADV-100	GenTegra RNAdvantage™ , 100 ml bottle
GTRADV-250	GenTegra RNAdvantage™ , 250 ml bottle
GTRADV-500	GenTegra RNAdvantage™ , 500 ml bottle



GenTegra RNAssure™

- Patented Active Chemical Protection™ (ACP)
- Protects RNA integrity during routine sample handling and preparation
- Protects RNA samples from adverse or accidental exposure to higher temperatures
- Inactivate all residual RNase activity carried over from purification process or environmental contamination
- RNAssure™ protected samples can be used directly in downstream applications without the need for further purification
- Protects RNA from oxidation damage and non-specific adherence to plastic
- Integrates into standard RNA extraction kit workflows such as Invitrogen, Qiagen or Zymo
- Protects RNA at ambient temperature for 3 days, at refrigeration (2 – 8 °C) for 2 weeks and frozen (approx. -70 °C) for more than 1 year
- Available in 1.5 ml tube and 96-well plate format



Protocol:

For the final elution step, simply place the spin column in the collection tube (1), add the elution buffer to the column (2), centrifuge the column and tube, remove the column and store the tube (3). The RNA is now protected by RNAssure™ for 3 days at ambient temperature.

Cat. No.	Description
GTR03-LQ	GenTegra RNAssure™ 1.5 ml flip top tube, evaluation pack, 3 tubes
GTR50-LQ	GenTegra RNAssure™ 1.5 ml flip top tube, 50 tubes
GTR96-LQS	GenTegra RNAssure™ , 96-well semi skirted PCR plate
GTR9610-LQS	GenTegra RNAssure™ , 10 x 96-well semi skirted PCR plate

Collection Cards for biobanking, paternity tests and forensics field sample collection without cold chain

Collection cards are ideal for field sample collection in areas where a cold chain is unavailable or difficult to maintain. GenTegra offers cards for every need, DNA collection, RNA collection or sample collection for analysis of small molecule metabolites.

The GenSaver cards have the same Active Chemical Protection™ that is provided for GenTegra DNA. When collecting dried blood spots (DBS) for ambient temperature transportation or long-term DNA storage, this is the card of choice. It protects the DNA even at elevated temperatures and for oxidative damage while being stored. DBS on GenSaver cards can be used directly for PCR with no cleanup step required. A small punch can be added directly to the PCR mix without inhibition of the PCR reaction.



GenSaver 2.0™ Cards and GenSaver 2.0™ Color Cards

- Treated with a new-to-market proprietary chemistry intended for ultra long-term preservation at ambient temperature (blood samples 20 years; saliva, buccal cells, and urine samples 10 years).
- White cards are for blood samples; Color Cards in pink are for colourless samples (saliva, buccal cells, urine). The area on which the biological sample is collected turns white, additional features prevent the growth of microorganisms during long-term storage of DNA.

Applications:

- PCR and quantitative PCR, STR & NGS genotyping, genomics, human and animal identification, plasmid screening
- Ideal for Forensic, Molecular Diagnostics, Pharmacogenomics, Research Genotyping, and Transgenic Detection

Cat. No.	Description
GS2D1-100	GenSaver 2.0™ DNA Card , one printed circle for blood collection
GS2D2-100	GenSaver 2.0™ DNA Card , two printed circles for blood collection
GS2D4-100	GenSaver 2.0™ DNA Card , four printed circles for blood collection
GS2D1-100C	GenSaver 2.0™ DNA Color Card , one printed circle for clear samples
GS2D2-100C	GenSaver 2.0™ DNA Color Card , two printed circles for clear samples
GS2D4-100C	GenSaver 2.0™ DNA Color Card , four printed circles for clear samples
GS2D96-50C	GenSaver 2.0™ DNA Color Card , 96 samples for clone collection, 50 cards
GS2D96-100C	GenSaver 2.0™ DNA Color Card , 96 samples for clone collection, 100 cards

Also available: Protein Protection Cards, a replacement to ProteinSaver.

TFN Cards, 5-spot, 70 µl per spot, version with cover (GBT5-100) or without cover (GTF5-100).

GenTegra® DNA

- 100 % recovery of input DNA, recovery in a volume of 0.05 – 25 µg
- Quality is comparable to input DNA
- Compatible with DNA from cell lines, blood, fresh and frozen tissue, FFPE tissue, cDNA, plasmids, single and double stranded
- Suitable for DNA purified using all standard kits and protocols (Invitrogen, Ambion, Qiagen, Trizol)
- Applicable with all common storage buffers, including water, TE, EDTA and citrate
- Increased stability in liquid state for up to 8 hours following rehydration of dried DNA, across up to 5 cycles
- Stabilizes DNA for transport and long-term storage for more than 30 years at room temperature
- Use in downstream applications without further purification; no inhibition of PCR, qPCR and expression profiling
- Stability for transport due to tolerance for extreme temperatures and extreme temperature shifts (-80 °C to +72 °C)
- Replaces the expensive shipment of samples with dry ice or cool packs
- All GenTegra® DNA products have a shelf life of more than 3 years when stored at room temperature

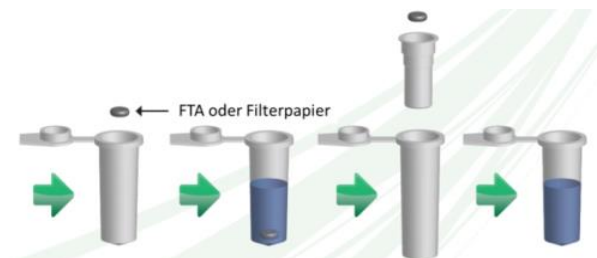
Protocol as
GenTegra® RNA



Cat. No.	Description
GTD100-B	GenTegra® DNA , dry bulk, for 100 samples can be stored at 4 °C for 3 months when rehydrated
GTD1000-1	GenTegra® DNA , dry bulk, for 1000 samples
GTD2000-1	GenTegra® DNA , dry bulk, for 2000 samples
GTD4000-1	GenTegra® DNA , dry bulk, for 4000 samples
GTD0001	GenTegra® DNA , 0.3 ml cluster tube, 1 rack, 96 tubes per rack, no barcode
GTD0010	GenTegra® DNA , 0.3 ml cluster tube, 10 racks, 96 tubes per rack, no barcode
GTD1010-BC	GenTegra® DNA , 0.5 ml cluster tube, 10 racks, 96 tubes per rack, with barcode
GTD2003-S	GenTegra® DNA , 0.5 ml screw cap tube, sample test kit 3-pack, with protocol
GTD2025-S	GenTegra® DNA , 0.5 ml screw cap tube, 25 tubes
GTD2100-S	GenTegra® DNA , 0.5 ml screw cap tube, 100 tubes <u>Please note:</u> Product will be delivered in 4 packs of 25 tubes/pack
GTD4001-P	GenTegra® DNA , 96-well plate, 1 plate, no barcode
GTD4010-P	GenTegra® DNA , 96-well plate, 10 plates, no barcode
GTD4010-PBC	GenTegra® DNA , 96-well plate, 10 plates, with barcode

GenSolve™ & GenSolve™ DNA Complete

- Regardless of storage time, this kit efficiently extracts double-stranded DNA from treated paper spotted with blood or other biological liquids (GenSaver™ cards, GenPlate®, FTA membranes), and untreated paper (filter papers, GenCollect™ and Guthrie cards)
- Fast recovery (approx. 90 minutes) of DNA with high yields for further purification
- **GenSolve™ DNA Complete** additionally includes all components for DNA purification (wash solution and elution buffer, several tubes and DNA columns)



From filter paper to purification in only 90 minutes

Cat. No.	Description
GVR-113	GenSolve™ , DNA recovery kit, 100 reactions (improved)
GVSPIN-200	GenSolve™ Spin Pack , 200 tubes and baskets
GSC-50B	GenSolve™ Complete , DNA recovery and purification kit for 50 reactions
GSC-100B	GenSolve™ Complete , DNA recovery and purification kit for 100 reactions