

Flexcell[®] Baseplate Kits

Expand the application areas of your Tension or Tissue Train[®] System.

- **BioFlex[®] Baseplate Kit (BFBK-4000)**
 - Apply equibiaxial strain to cells cultured in monolayer in the BioFlex[®] culture plates (page 17) or to 3D constructs in the Tissue Train[®] Circular Foam culture plates.
 - Available with 25 mm, 28 mm, or 31 mm diameter cylindrical Loading Stations[™].
- **Tissue Train[®] Baseplate Kit (TTBK-4000) for creating 3D tissues**
 - Create 3D cell constructs on Tissue Train[®] culture plates using Trough Loaders[™] (molds).
 - Apply uniaxial strain to cells cultured on Tissue Train[®] or cultured on UniFlex culture plates with the supplied Arctangle[®] Loading Stations[™].
- **UniFlex[®] Baseplate Kit (UFBK-4000)**
 - Apply uniaxial strain to cells cultured in monolayer on the membrane of the UniFlex[®] culture plates.
- **24-Well HT Baseplate Kit (HTBK-4000)**
 - High throughput strain tests of cells cultured in Flexcell's[®] 24-well HT BioFlex[®] culture plates.
 - Kit includes Cell Seeders[™] to place cells in the central region of the wells.

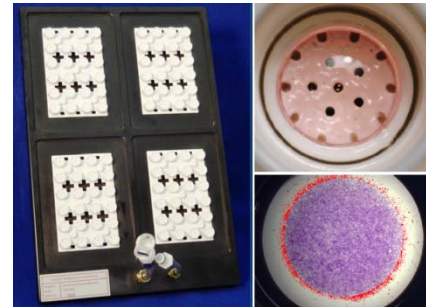


Figure 13. 24-Well HT Baseplate Kit with Cell Seeders[™]

All Baseplate Kits include:

- Baseplate with Loading Stations[™]
- Four Gaskets
- Four Sample culture plates
- Acrylic Window
- Grease
- Software update (if needed)
- TTBK-4000 also includes Trough Loaders[™]
- HTBK-4000 also includes Cell Seeders[™]